

APEM

www.apem.com

APEM BRINGS YOU A HIGH-PERFORMANCE SWITCH FOR INTERFACE SOLUTIONS
THAT NEED TO BE EASILY IDENTIFIABLE:
THE WP SERIES PUSHBUTTON FEATURES A WIDE ACTIVATION SURFACE
TO INCREASE THE VISIBILITY OF YOUR CRITICAL FUNCTIONS.

WP & WPG Series

The 360° protective collar was designed to drain water away easily and increase the robustness of this metal momentary pushbutton.

PANEL
SWITCHES

PCB SWITCHES

LED INDICATORS

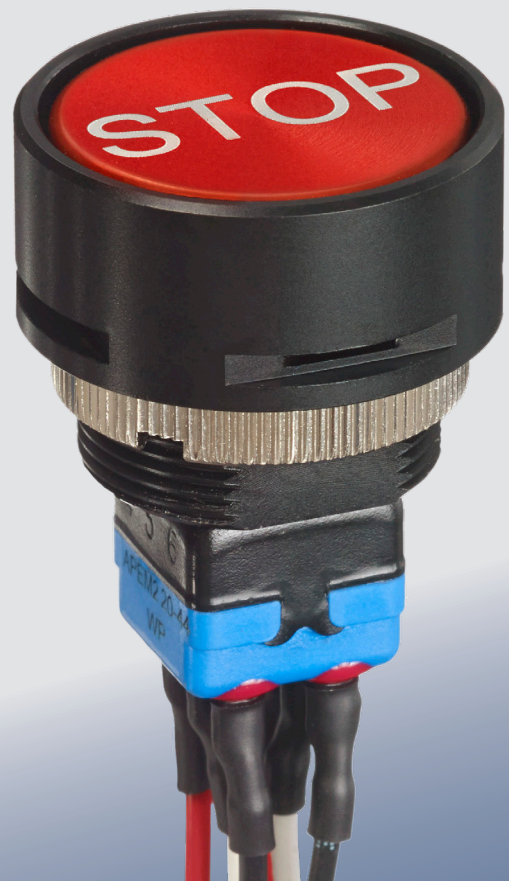
JOYSTICKS

SWITCH PANELS

CORE TARGETS

THE WP SERIES WITH ITS WPG SERIES
COVER ARE IDEALLY SUITED TO:

- Military applications
- Outdoor applications
- Applications in harsh environments



WP & WPG SERIES

MOMENTARY PUSHBUTTON WITH
EXTRA-WIDE ACTIVATION SURFACE

CUSTOMER BENEFITS

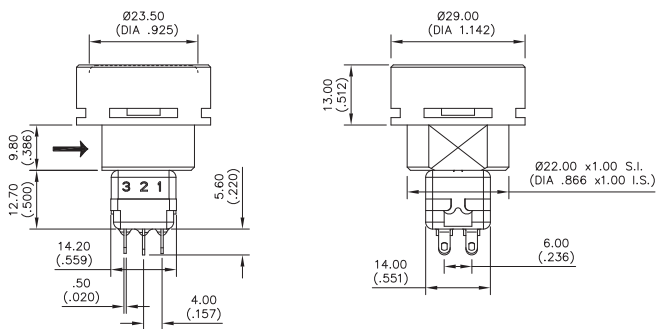
- Excellent sealing for applications in harsh environments (IP67 and IP69K).
- Easy integration and mounting: flush mounting with a 22 mm circular bush and compact below-panel housing.
- The metal body and button are able to resist bearing forces of up to 100N.
- The side openings in the collar drains off any water to prevent freezing in extreme weather conditions.
- The pushbutton has a colored anodized finish for greater resistance to wear and corrosion.

END-USER EXPERIENCE

- Fast, easy function identification: the wide-diameter push button (25 mm) allows for a larger logo, increasing the visibility of the activation surface.
- Excellent tactile feedback.
- Safe activation: the collar and safety cover (optional) prevent unintentional operation when the switch is installed outdoors.

TECHNICAL FEATURES

- Wide-diameter pushbutton (25 mm)
- IP67 and IP69K
- Double pole
- Momentary electrical function
- PCB, flying lead, solder lug terminals
- Compact below-panel housing



CUSTOMIZATION POSSIBILITIES

- Laser marking
- Anodized push button
- Wire terminal (type, length), connectors

SWITCH GUARD WPG SERIES



- Two-position cover.
- Metal material for high impact resistance.
- Three types of switch guards (held up, down or both).
- Eight colors available for the mobile part.



[Visit the product web page](#)

[Download the datasheet](#)

CONTACTS

BENELUX +32 27 25 05 00 - sales@apem.be
CHINA +86 21 6076 1355 - apem@apem.com.cn
DENMARK +45 44 97 33 66 - danmec@mec.dk
FRANCE +33 563931498 - commercial@apem.fr
GERMANY +49 8945991133 - info@apem.de

ITALY +39 0172 74 3170 - apem.italia@apem.it
SWEDEN +46 8 626 38 00 - info@apem.se
UNITED KINGDOM +44 1 844 202400 - sales@apem.co.uk
USA - HAVERHILL 1-978-372-1602 - info@apem.com
USA - VISTA 1-760-598-2518 - info@apem.com



www.apem.com